

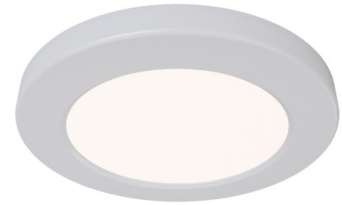
Light efficiency:

72 Lumen/Watt

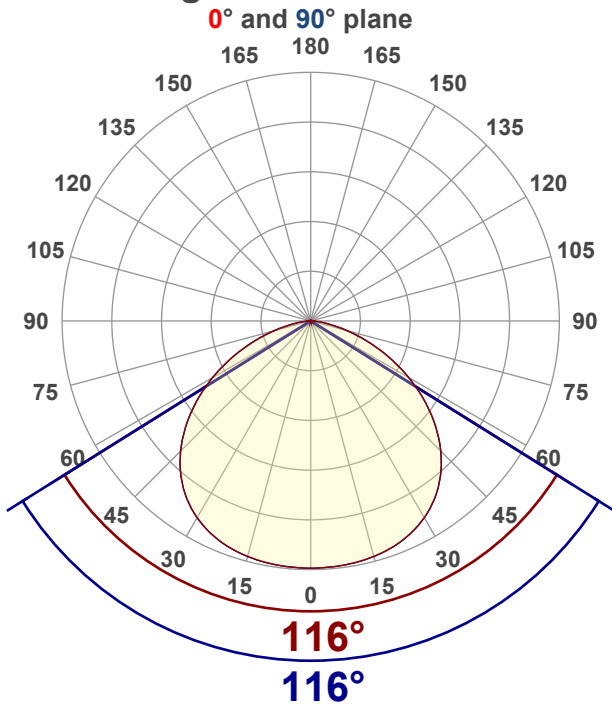
Color temperature:

2770 K

Light quality:

CRI:93.2, R_g:91.6, R_f:97.0**P: 2 / V: - / F: 3****Output: 939 lm****Peak: 314 cd****Power: 13.1 W****Voltage: 120 V****Current: 0.122 A****PF: 0.9****THD: 47.07 %**

Angular Distribution



Product name:

SLMT6-13W-WH - 2700K

Test Date:

12/1/2025

Beam Angle (50% of the brightness of the centre):

116°

Field Angle (10% of the brightness of the centre):

157.1°

Cut Off Angle (2.5% of the brightness of the centre):

171.2°

Beam Details

*measured at centre of beam

Mounting Height (feet)/(meter)	Lux*	Footcandles*	Beam width (feet) / (meter)
4 ft / 1.2 m	211 lx	20 fc	12.8 ft / 3.9 m
8 ft / 2.4 m	53 lx	5 fc	25.6 ft / 7.8 m
12 ft / 3.7 m	23 lx	2 fc	38.4 ft / 11.7 m
16 ft / 4.9 m	13 lx	1 fc	51.2 ft / 15.6 m
20 ft / 6.1 m	8 lx	1 fc	64 ft / 19.5 m

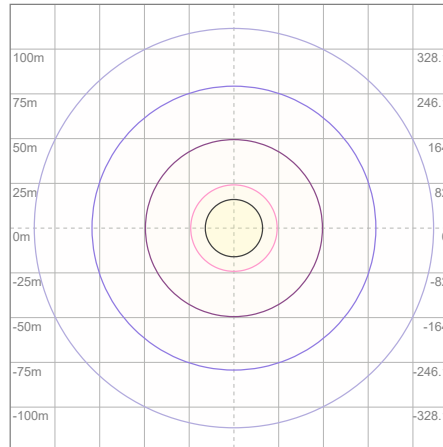
Beam center

Photometric Testing Report

Zonal Lumen Summary

Zone	Lumen	%Luminaire
0-30	255	27.16%
0-40	427	45.47%
0-60	764	81.36%
60-90	174	18.53%
70-100	64.5	6.87%
90-120	0.682	0.07%
0-90	938	99.89%
90-180	1.59	0.17%
0-180	939	100.00%

ISO Lux Diagram



Lux at center:	34 lx
3%	1.02 lx
5%	1.70 lx
10%	3.40 lx
30%	10.20 lx
50%	17.00 lx

Conditions:

Number of planes: 8

Lux distribution on a surface when lamp is mounted at 3.05 meters from the surface.

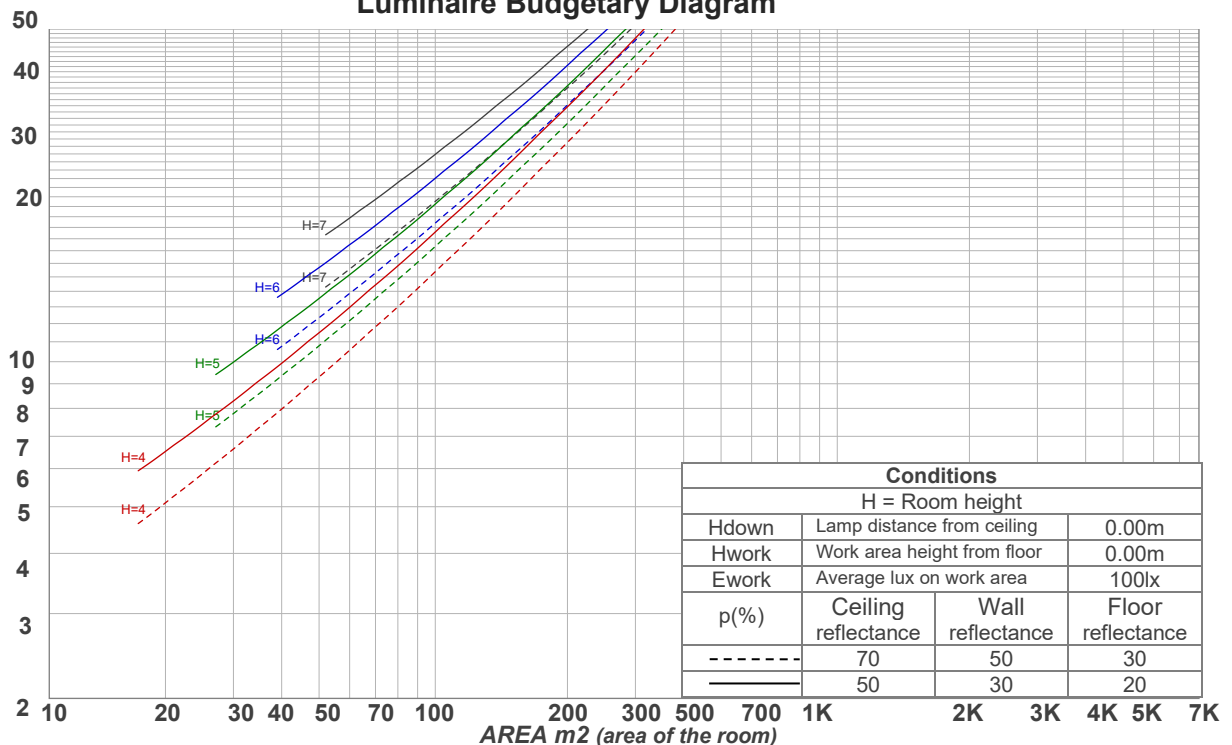
Mounting height: 3.05 meters (10 feet)

Coefficients of Utilization

Ceiling reflectance	80				70				50			30			10			0
Wall reflectance	70	50	30	10	70	50	30	10	50	30	10	50	30	10	50	30	10	0
Floor reflectance	20	20	20	20	20	20	20	20	20	20	20	20	20	20	20	20	20	0
RCR	(RCR: Room Cavity Ratio)				Room Values are expressed as percentage of Lumens delivered to the task surface													
0	119	119	119	119	116	116	116	116	111	111	111	106	106	106	102	102	102	100
1	109	105	100	97	106	102	99	95	98	95	92	94	92	89	90	88	87	85
2	99	91	85	79	97	89	83	78	86	81	76	83	78	75	80	76	73	71
3	91	80	72	66	88	79	71	65	76	69	64	73	68	63	70	66	62	60
4	83	71	62	56	81	70	62	55	67	60	55	65	59	54	63	57	53	51
5	76	63	55	48	74	62	54	48	60	53	47	58	52	47	56	51	46	44
6	70	57	48	42	68	56	48	42	54	47	41	53	46	41	51	45	40	38
7	65	52	43	37	63	51	43	37	49	42	36	48	41	36	46	40	36	34
8	61	47	39	33	59	46	38	33	45	38	32	44	37	32	43	37	32	30
9	57	43	35	29	55	43	35	29	41	34	29	40	34	29	39	33	29	27
10	53	40	32	27	52	39	32	27	38	31	26	37	31	26	36	30	26	24

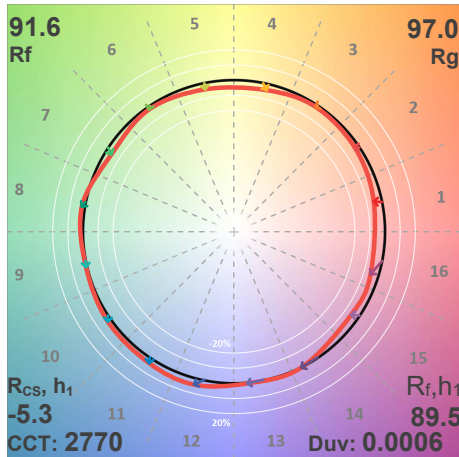
LAMPS (number of lamps)

Luminaire Budgetary Diagram

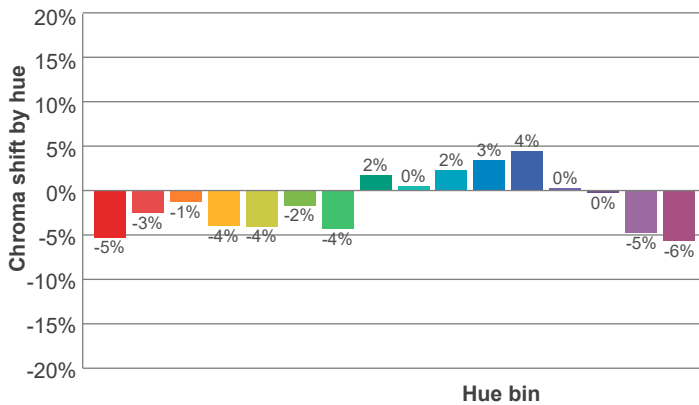
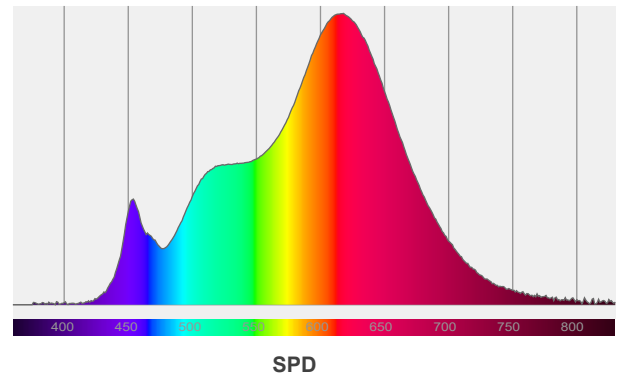
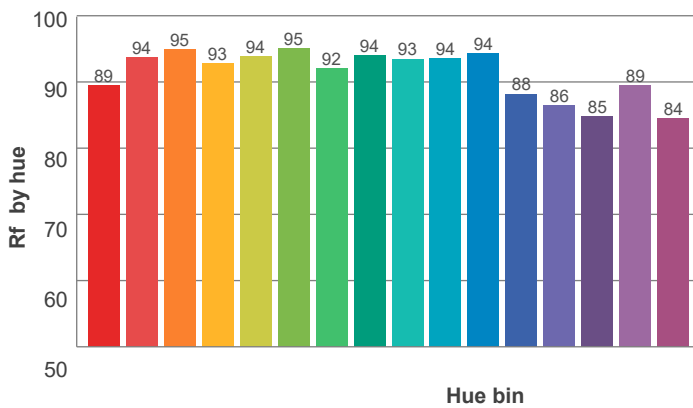
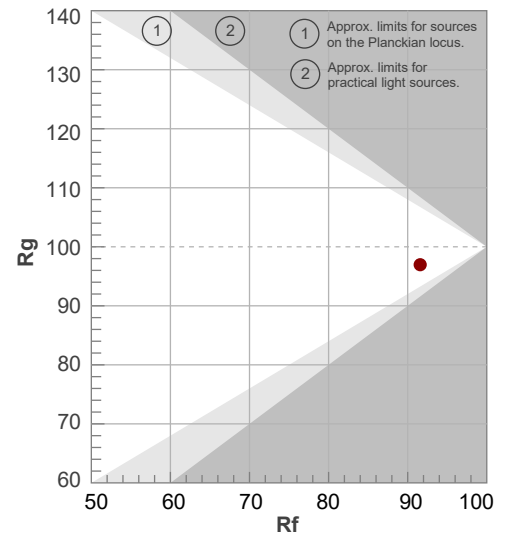


ANSI/IES TM-30-18

P: 2 / V: - / F: 3



Hue Bin	R _f	Shifts (%)	
		Chroma	Hue
1	89	-5%	1%
2	94	-3%	2%
3	95	-1%	1%
4	93	-4%	-3%
5	94	-4%	0%
6	95	-2%	2%
7	92	-4%	3%
8	94	2%	4%
9	93	0%	4%
10	94	2%	3%
11	94	3%	2%
12	88	4%	-6%
13	86	0%	-11%
14	85	0%	-13%
15	89	-5%	-3%
16	84	-6%	-10%



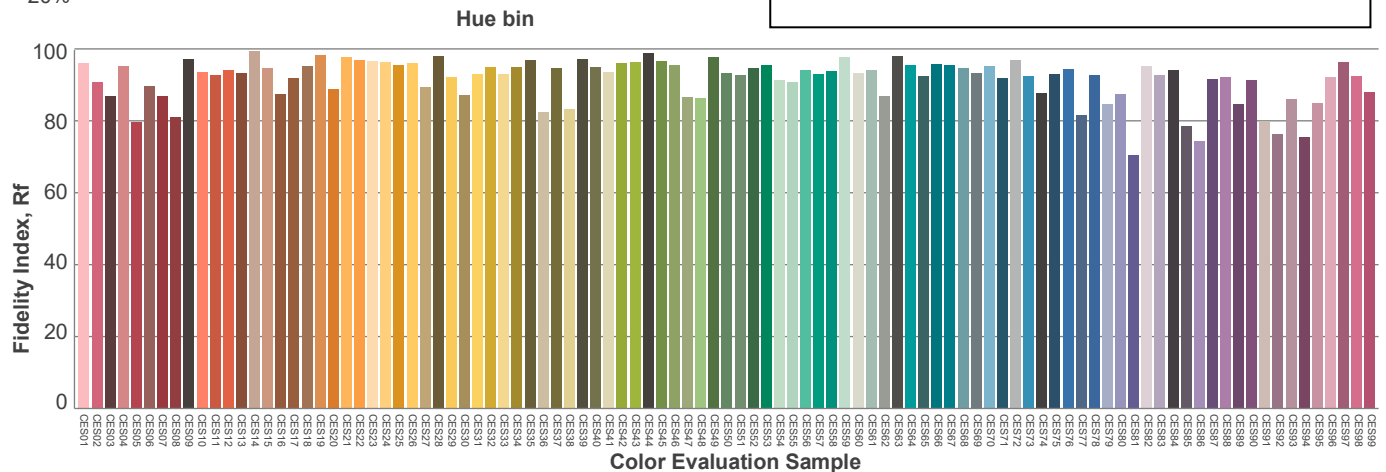
Red: 36.9%, Power=7.9mW

Blue: 8%, Power=4.7mW

Green: 24.3%, Power=10.2mW

UVA: 0.1%, Power=0.0mW

Dominant Wavelength: 584nm

1st Peak Wavelength: 618nm2nd Peak Wavelength: 454nm

Glare Evaluation According to UGR

p Ceiling		70	70	50	50	30	70	70	50	50	30
p Walls		50	30	50	30	30	50	30	50	30	30
p Floor		20	20	20	20	20	20	20	20	20	20
Room size X Y		Viewing direction at right angles to lamp axis					Viewing direction parallel to lamp axis				
2H	2H	23.9	25.1	24.1	25.4	25.6	23.9	25.1	24.1	25.4	25.6
	3H	25.0	26.3	25.4	26.5	26.7	25.0	26.3	25.4	26.5	26.7
	4H	25.4	26.6	25.8	26.9	27.2	25.4	26.6	25.8	26.9	27.2
	6H	25.7	26.8	26.0	27.0	27.4	25.7	26.8	26.0	27.0	27.4
	8H	25.8	26.8	26.1	27.1	27.5	25.8	26.8	26.1	27.1	27.5
	12H	25.8	26.8	26.2	27.1	27.5	25.8	26.8	26.2	27.1	27.5
4H	2H	24.4	25.6	24.8	25.8	26.1	24.4	25.6	24.8	25.8	26.1
	3H	25.8	26.8	26.2	27.1	27.6	25.8	26.8	26.2	27.1	27.6
	4H	26.3	27.2	26.7	27.6	28.1	26.3	27.2	26.7	27.6	28.1
	6H	26.6	27.4	27.1	27.8	28.2	26.6	27.4	27.1	27.8	28.2
	8H	26.7	27.4	27.2	27.8	28.2	26.7	27.4	27.2	27.8	28.2
	12H	26.7	27.3	27.2	27.8	28.2	26.7	27.3	27.2	27.8	28.2
8H	4H	26.4	27.2	27.0	27.6	28.0	26.4	27.2	27.0	27.6	28.0
	6H	26.9	27.5	27.4	27.9	28.5	26.9	27.5	27.4	27.9	28.5
	8H	27.0	27.5	27.5	28.1	28.7	27.0	27.5	27.5	28.1	28.7
	12H	27.1	27.5	27.7	28.0	28.7	27.1	27.5	27.7	28.0	28.7
12H	4H	26.4	27.1	26.9	27.5	28.0	26.4	27.1	26.9	27.5	28.0
	6H	26.9	27.4	27.4	27.9	28.6	26.9	27.4	27.4	27.9	28.6
	8H	27.1	27.5	27.7	28.0	28.6	27.1	27.5	27.7	28.0	28.6
Variation of the observer position for the luminaire distance S											
S = 1.0H		0.1 / -0.1					0.1 / -0.1				
S = 1.5H		0.3 / -0.4					0.3 / -0.4				
S = 2.0H		0.7 / -0.8					0.7 / -0.8				
Standard table		n/a					n/a				
Correction summand		n/a					n/a				
Corrected glare indices referring to 939 lm total luminous flux											

Due to our continued efforts to improve our products, product specifications are subject to change without notice. Please refer to our website for the latest test results.